


UNIQ



UC-685CL 
Color CCD Camera
User's Manual

091-0686 V.1.5

08-09-17

Table of Contents

Warning	2
Precautions	2
Limited Warranty	2
1. Introduction	3
2. Camera Setup	5
3. Camera Functions	5
4. RS-232C Communication Control	9
5. Digital Interface Timing	10
6. Camera Functional Timing	11
7. Camera Accessories	13
8. Technical Support	13

WARNING

**TO PREVENT FIRE OR ELECTRIC SHOCK HAZARD,
DO NOT EXPOSE THIS CAMERA UNIT TO RAIN OR MOISTURE.
DO NOT ATTEMPT TO REMOVE CAMERA COVER OR MODIFY THE CAMERA UNIT,
WARRANTY WILL BE VOIDED.**

PRECAUTIONS

**Do not attempt to disassemble, modify, or repair the camera. Contact UNIQ for help.
Do not point the camera at bright objects, such as the sun, for a long period. It may
cause CCD blooming and permanent damages.**

**Do not operate the camera beyond the temperature range. Avoid using the camera
above 90% humidity.**

Do not use unregulated power supply source.

**Do not touch CCD glass cover with fingers or any hard objects other than professional
glass cleaning solvents.**

Limited Warranty

**UNIQ warrants to the original customer to be free from defects in material and
workmanship for two full years from the date of original purchase. This warranty covers
failures or damages due to defects in material or workmanship, which occur during
normal use. It does not cover damages or failures, which result from shipment,
mishandling, abuse, misuse, or modification.**

**A Return Material Authorization (RMA) number is required prior to returning any UNIQ
product for repair or replacement.**

**This proprietary document may not be reproduced or photocopied without the consent of
UNIQ. UNIQ makes no warranty or assumes no responsibility for any errors, which may
appear in this document. UNIQ reserves the right to make changes without notice or
obligation.**

**For immediate technical assistance, please call (408) 330-0818 or email to
tech@uniqvision.com**

1. Introduction

1.1 General Description

The UC-685CL is a color digital CCD camera using progressive scanning interline-transfer technology with R, G, B primary color mosaic filters (Bayer arrangement). A frame grabber collects raw data and displays color images by software conversion. With the asynchronous capture control, high speed moving objects can be captured precisely. The square pixels are ideally for processing, measuring, and analyzing tasks. This compact and lightweight camera offers excellent signal to noise performance.

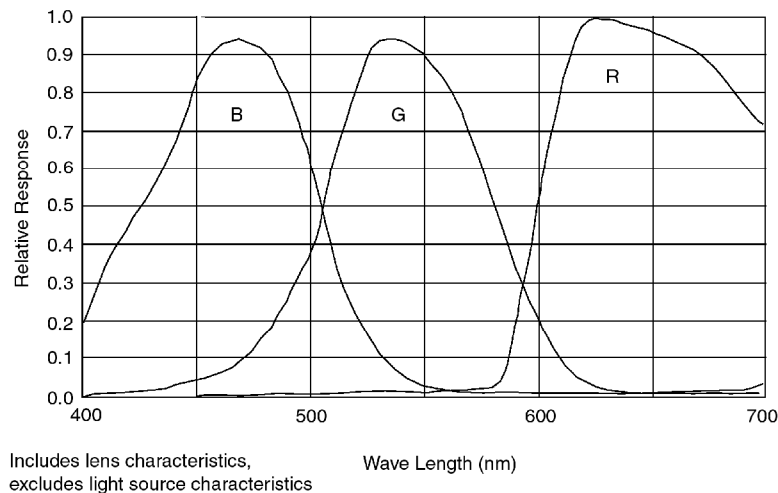
1.2 Features

- 1/2" Progressive scan CCD imager (R, G, B primary color mosaic filters)
- 659 x 494 active pixels
- 10 bit Camera Link output
- Full frame shutter (1/110 ~ 1/110,000 sec.)
- <56 dB
- Asynchronous reset at full frame shutter
- 110 Hz frame rate
- 40 MHz pixel clock
- RS232C interface control
- C-mount lens

1.3 Applications

UC-685CL applications include machine vision, automated inspection, motion capture and analysis, medical imaging, biomedical imaging, non-contact measurement, and other scientific and industrial applications where color image and high frame rate are needed.

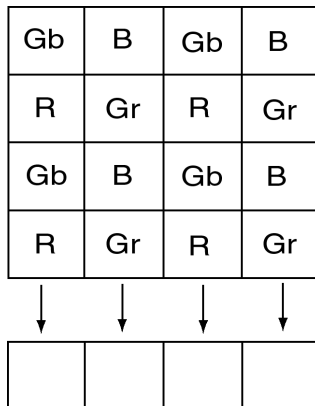
1.4 CCD Imager Spectral Response Curve



1.5 Camera Specifications

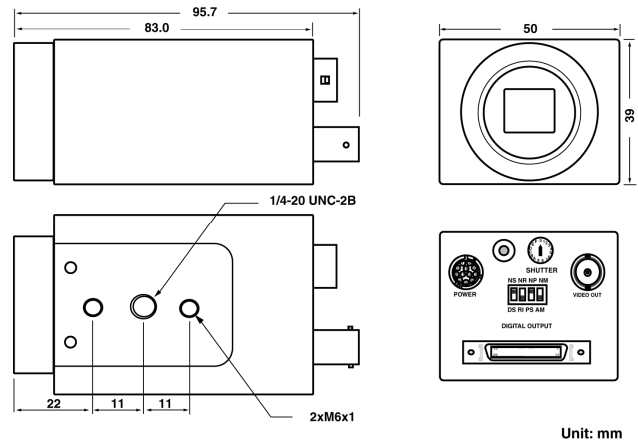
Model	UC-685CL
CCD Sensor	1/2" Progressive scan CCD (R, G, B primary color mosaic filters)
Chip Size	7.48 mm x 6.15 mm
Effective Pixels (H x V)	659 x 494
Unit Cell Size (H x V)	9.9 mm x 9.9 mm
Pixel Clock	40 MHz (80 MHz for master clock)
Frame Rate	110 fps
Sync.	HD: 55.6 KHz; VD: 110.0 Hz
Digital Video Output	Camera Link Format
Analog Video Output	1 V p-p, 75ohm (BNC or 12 pin Hirose)
S/N Ratio	<56 dB
Min. Illumination	5 lux
Gain	MGC
Gamma	1.0
Electronic Shutter	1/110 ~ 1/110,000 selectable
Lens Mount	C-Mount
Operating Temperature	-10 °C ~ +50 °C
Power Requirement	12V DC, 280 mA, 3.4 W
Dimension	50mm x 39mm x 83mm
Ext. Sync.	Internal/External Auto Switch
Asynchronous Reset	Standard
Weight	200 g

1.6 Color Coding Diagram



The bottom left pixel is the first signal output

1.7 Camera Dimension



Unit: mm

2. Camera Setup

A basic camera and frame grabber system setup, as shown in Figure 1 below, requires a UC-685CL camera, a standard C-mount lens, a PS-12C power supply or equivalent, a PC system and a VGA monitor, a frame grabber, and an external trigger device if necessary.

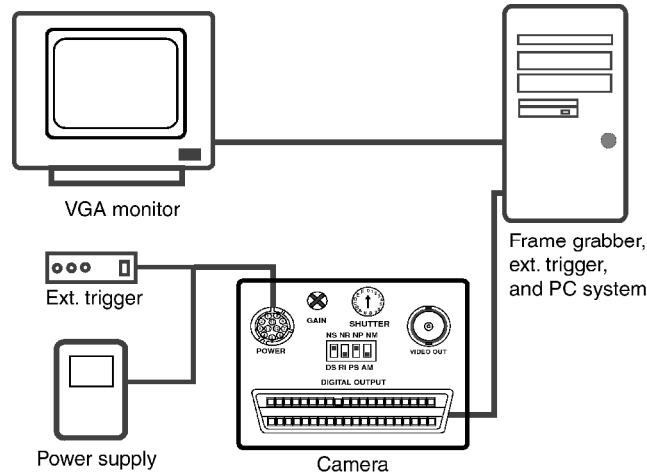


Figure 1. Camera and Frame Grabber System Setup

3. Camera Functions

3.1 12-Pin Connector

The 12-pin Hirose connector is located on the rear panel of the camera. All ground signals on pin 1, 3, 5, and 8 are common grounds. +12 V DC input is recommended on pin 2, but this camera should withstand $+12\text{ V} \pm 1\text{ V}$ input voltage. Make sure to set the NM/AM switch to NM position for external HD and VD locking. Figure 2 below shows a top view of the 12-pin Hirose connector.

Pin No.	UC-685CL
1	GND
2	+12V DC input
3	GND
4	Video
5	GND
6	N/C
7	N/C
8	GND
9	N/C
10	N/C
11	Integration control
12	N/C



Figure 2. 12-Pin Hirose Connector

3.2 Mode Switches Selection

Designation:

NS-Functional select

DS-Shutter speed select

NR- RS-232C communication Enable

RI- Rear switch control Enable

NP- Reserved for custom options

PS- Reserved for custom options

NM-Normal mode

AM-Asynchronous mode

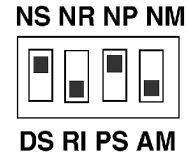


Figure 3. Mode switches

Timing details of the mode switches are shown in section 6.

3.3 Shutter Speed Dial Switch

Shutter speed dial switch is located on the rear panel and there are 16 different positions. To select camera gain, reference, or to save a user page, set NS/DS switch to NS position. To adjust shutter speed, set NS/DS to DS position. For normal shutter speed, make sure to set NM/AM mode to NM location. For asynchronous capture, set NM/AM mode to AM location.

Position No.	Functional Select (NS)	Shutter Speed Select (DS)	
		Shutter Speed (sec) (NM Mode)	Asynchronous Capture (sec) (AM Mode)
0	Normal	1/110	1/110
1	Gain Adjustment	1/125	1/250
2	Reference Adjustment	1/250	1/500
3	Factory Page	1/500	1/1000
4	User Page 1	1/1000	1/2000
5	User Page 2	1/2000	1/4000
6	User Page 3	1/4000	1/5000
7	User Page 4	1/5000	1/6000
8	Normal Speed/Double Speed	1/6000	1/8000
9	Reserved	1/8000	1/10000
A	Reserved	1/10000	1/12000
B	Reserved	1/12500	1/15000
C	Reserved	1/15000	1/20000
D	Reserved	1/20000	1/31000
E	Reserved	1/31000	1/110000
F	Reserved	1/110000	Pulse Width Control

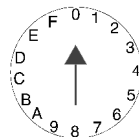


Figure 4. Shutter Speed Dial Switch

3.4 Momentary Switch (UP/Down Switch)

Position No.	Functional Select (NS)	Up/Down Switch
0	Normal	N/A
1	Gain Adjustment	Move up or down to adjust gain
2	Reference Adjustment	Move up or down to adjust reference
3	Factory Page	Move up or down to recall factory page
4	User Page 1	Up: Recall; Down: Save
5	User Page 2	Up: Recall; Down: Save
6	User Page 3	Up: Recall; Down: Save
7	User Page 4	Up: Recall; Down: Save
8	Normal speed/Double speed	Up: Normal speed; Down: Double speed (N/A)
9	Reserved	
A	Reserved	
B	Reserved	
C	Reserved	
D	Reserved	
E	Reserved	
F	Reserved	

Camera settings can be saved into four different user pages. Once the user page is saved and set between shutter speeds 4 and 7, it will be activated as long as the camera is powered ON. User Page works in both rear plate control and RS232C communication selections.



Figure 5. Up/Down Switch

3.5 Gain Control (AGC/MGC)

Note: This gain potentiometer only applies to cameras without Up/Down switch on rear plate.

Manual gain control (MGC)

MGC is standard factory setting on this camera. The manual gain control can be adjusted from 4 dB to 36 dB. Adjusting the gain potentiometer located on rear panel will change the gain value.

Automatic gain control (AGC):

AGC is not available and it is not recommended to use. Contact UNIQ for further details.



Figure 6. Gain potentiometer

3.6 26-Pin Camera Link Connector

PIN NO.	CAMERA LINK SYMBOL	UNIQ CAMERA SYMBOL	FUNCTION
1, 14	INNER SHIELD	SHIELD	Inner shielding
2, 15	X0-, X0+	DATA0-, DATA0+	Video, LEN and FEN data output
3, 16	X1-, X1+	DATA1-, DATA1+	Video, LEN and FEN data output
4, 17	X2-, X2+	DATA2-, DATA2+	Video, LEN and FEN data output
5, 18	Xclk-, Xclk+	CLK-, CLK+	Pixel clock output
6, 19	X3-, X3+	DATA3-, DATA3+	Video, LEN and FEN data output
7, 20	SerTC+, SerTC-	Rx+, Rx-	Differential pair, serial communications from frame grabber
8, 21	SerTFG-, SerTFG+	Tx-, Tx+	Differential pair, serial communications to frame grabber
9, 22	CC1-, CC1+	HD-, HD+	Camera Control 1 (CC1) - Horizontal signal input
10, 23	CC2+, CC2-	VINT/VD+, VINT/VD-	Camera Control 2 (CC2) - Vertical signal or asynchronous reset input
11, 24	CC3-, CC3+	Reserved	Reserved for custom options
12, 25	CC4+, CC4-	Reserved	Reserved for custom options
13, 26	INNER SHIELD	SHIELD	Inner shielding

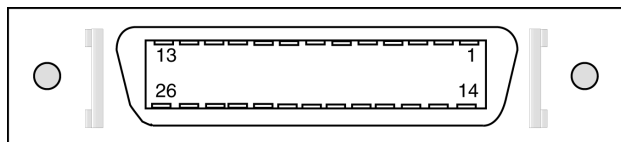


Figure 8. 3M 26-pin Camera Link Connector (MDR-26 pin)

4. RS-232C Communication Control

UNIQ does not provide its own software program for RS232C communication, contact frame grabber vendor or UNIQ for further details.

Command	Command Name	Notes
?	Error	"?" Error will appear on screen if incorrect command is entered
ru#	Recall user page	Must have a number after "ru" such as 1, 2, 3 or 4
rp	Report current camera setting	G = Gain; R = Reference S = Shutter Mode; NS, NM (refer to rear plate setting)
rf	Recall factory setting page	Factory default setting
sm#	Shutter mode	Must have a number after sm (1 ~ f), refer to section 3.3 for details.
sp#	Save user page	There are 4 user page available
ns	Normal speed	Refer to camera specifications
ds	Double speed	Refer to camera specifications
nm	Normal mode	Normal free running
am	Asynchronous mode	Asynchronous reset
gi###	Gain increase	### = Hexadecimals (000 ~ 3ff). If no number entered, gain will be increased by factor of 1. If a number is entered, then number will be added to stored gain.
gd###	Gain decrease	### = Hexadecimals (000 ~ 3ff). Same as gi above, except it will be decreased.
gn###	Gain number	### = Hexadecimals (000 ~ 3ff). Refer to the gain curves below for details. Only one curve applies to each camera depending on camera model, contact UNIQ for further details.
bi###	Reference increase	### = Hexadecimals (000 ~ 3ff). If no number entered, reference will be increased by factor of 1. If a number is entered, then number will be added to stored reference. Note: It's very uncommon to change reference level, contact UNIQ for further details.
bd###	Reference decrease	
bn###	Reference number	

Note:

1. Command must be in "lower case."
2. All numbers have to be in "hex" format, use a PC calculator to convert between hex and decimal numbers if necessary.
3. Command example:

User Enters: "sm5" (shutter speed at 5)

Camera returns: "?" or "3f" in Hex

(incorrect answer, no RS232C communication or something's wrong)

or

Camera return: "□" or "1" in Hex (correct answer, it might show other symbols depending on PC system)

4. Gain Curves:

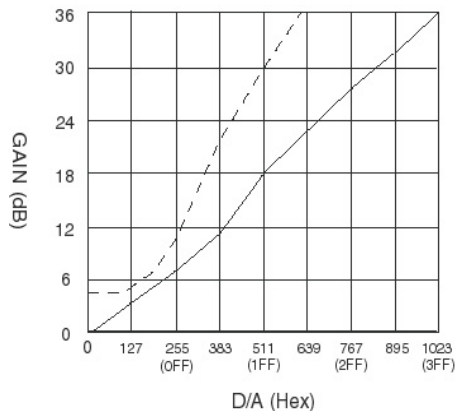
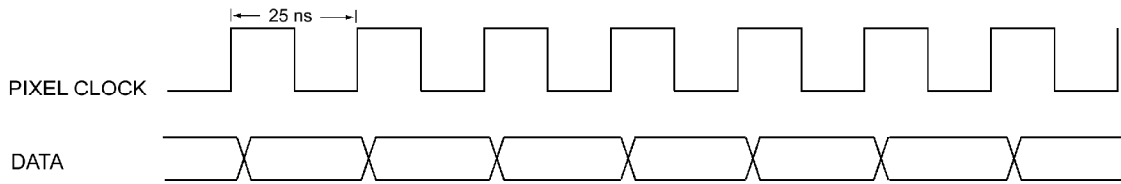


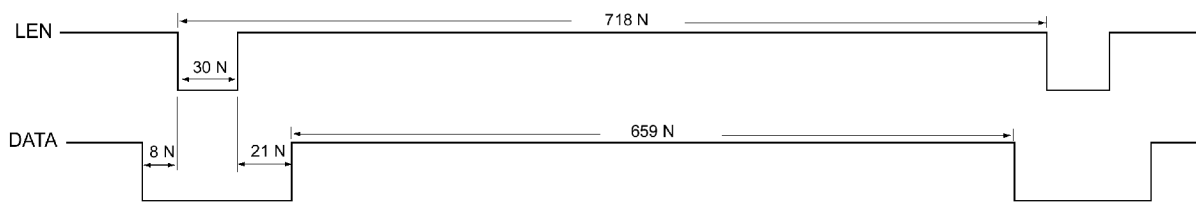
Figure 9. Camera Gain Curves

5. Digital Interface Timing

5.1 Pixel Clock



5.2 Line Enable



5.3 Frame Enable

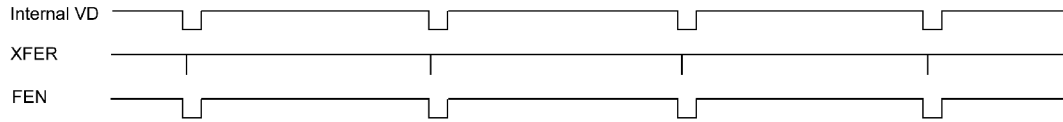


Note:

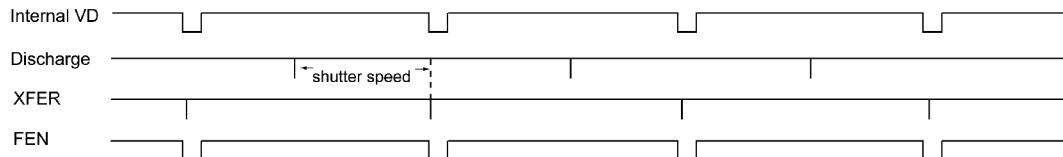
1. Pixel clock = 40MHz
2. 1 N = 25 nsec
3. 1 H = 718 N

6. Camera Functional Timing

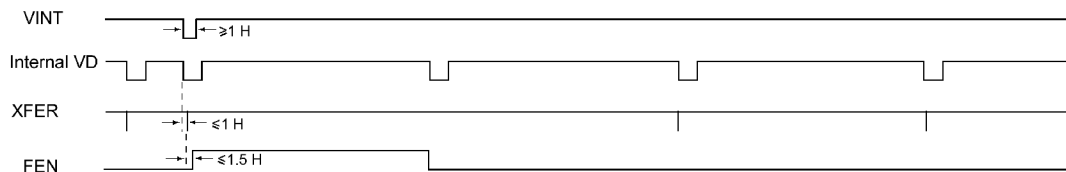
6.1 Free Run (Shutter Speed position 0, 110 fps)



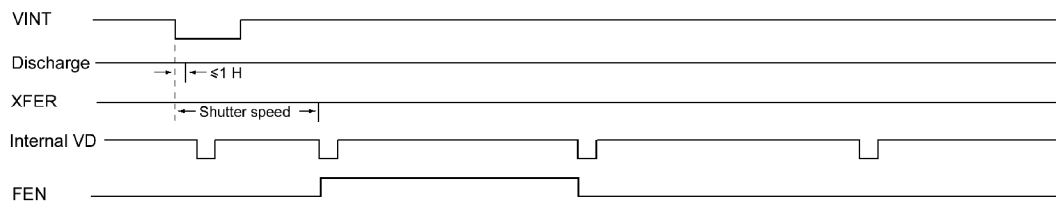
6.2 Free Run (Shutter speed position from 1 to F)



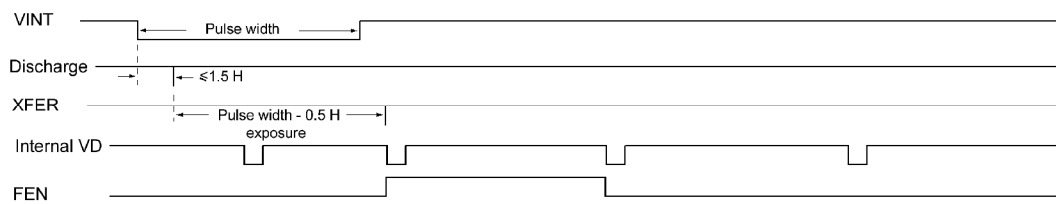
6.3 Asynchronous Capture (Shutter speed position 0)



6.4 Asynchronous Capture (shutter speed position from 1 to E)



6.5 Asynchronous Capture with Pulse Width Control (shutter speed: F)



6.6 External Synchronization and Gen-lock (via Camera Link interface ONLY)

The UC-685CL camera automatically locks to the external sync source. The external sync source must match the camera HD and VD specification, which are 55.554 KHz and 110.0 Hz respectively. Both external HD and VD are TTL level signals.

a) HD

H: 2.5V to 5V
 L: 0V or GND
 Pulse width: 5-50% duty cycle, see figure 8 shown below.

b) VD

H: 2.5V to 5V
 L: 0V or GND
 Pulse width: 0.5-50% duty cycles

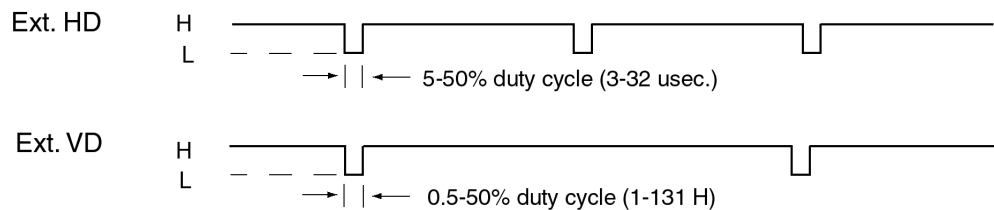


Figure 10. External Synchronization and Gen-lock Timing

6.7 Integration (via 12-pin Hirose connector ONLY)

The UC-685CL camera can be integrated up to 2 seconds without severe noise or dark current effect. To start integration, pin #11 (same as pin #27 of 40-pin digital connector) of the 12-pin connector must be connected to GND or 0V. The integrated video will be shifted out following the next vertical drive after pin #11 goes back to high or 5V level, as shown in figure 9 below. If a frame grabber does not capture the immediate frame or integrated video, the normal video (before the integration) will display again on the monitor.

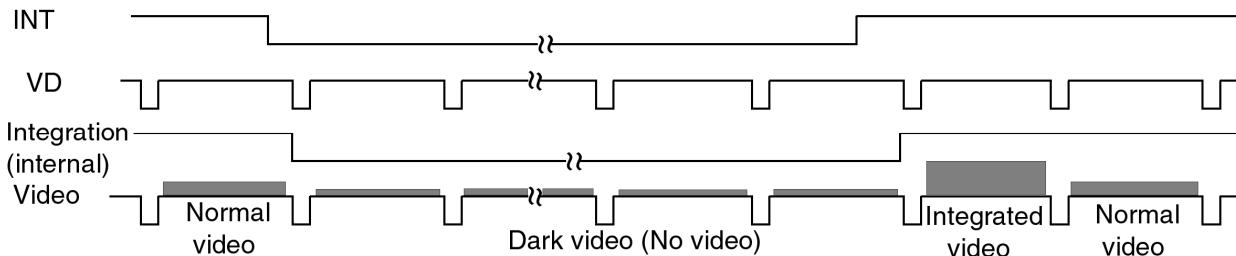


Figure 11. Integration Control Timing

7. Camera accessories

7.1 Power Supply and Power Cable

12 V DC regulated power supply with 1A current output or better is recommended. This camera uses Hirose 12-pin connector for power source. The matting cable plug connector can be purchased through distributors or UNIQ and the Hirose part number is **HR10A10P12S**. UNIQ provides power supplies and power cables as "one stop shopping" for customers. Alternatively, the power supplies and power cables can be purchased through power supply and cable vendors. Contact UNIQ for vendor list.

7.2 Lens

C-mount lens is the standard lens for UC-685CL camera. There are a variety of C-mount lenses in the market that works with UC-685CL camera. Make sure the quality and specification of the lens match the camera's application. Some of the most popular lenses in the market, such as Cosmimar, Fujinon, Rodenstock, and Schneider, are recommended.

7.3 Camera Link Cable

Camera Link cable can be purchased from 3M, Mouser, Digi-Key and frame grabber vendors.

8. Technical Support Information

For technical assistance, contact UNIQ Technical Support or Applications Engineer at

Phone: (408) 330-0818
Fax: (408) 330-0886
Email: info@uniqvision.com

Company contact information:

UNIQ VISION, INC.
2924 Scott Blvd.
Santa Clara, CA 95054

Phone: (408) 330-0818
Fax: (408) 330-0886

Our website: www.uniqvision.com
General Inquiries: info@uniqvision.com